

Arizona Specialty Hospital
Arizona Spine and Joint Hospital
East Valley Rehabilitation Hospital
OASIS Hospital

Dignity Health Arizona Joint Venture Hospitals

2022 Community Health Implementation Strategy


Adopted October 2022



Table of Contents

At-a-Glance Summary	3
Our Hospitals and the Community Served	4
About the Hospitals	4
Our Mission	4
Financial Assistance for Medically Necessary Care	5
Description of the Community Served	5
Community Assessment and Significant Needs	7
Significant Health Needs	8
2022 Implementation Strategy	10
Creating the Implementation Strategy	10
Strategy by Health Need	11

At-a-Glance Summary

<p>Community Served</p> 	<p>The four Dignity Health Arizona Joint Venture Hospitals as listed and described on page 4 serve the geographic area of Maricopa County which encompasses 9,224 square miles, includes 27 cities and towns, as well as the whole or part of five sovereign American Indian reservations. With an estimated population of 4.3 million and growing, Maricopa County is home to well over half of Arizona’s residents. The community served is ethnically and culturally diverse.</p>
<p>Significant Community Health Needs Being Addressed</p>	<p>The significant community health needs the hospitals are helping to address and that form the basis of this document were identified in the hospitals’ most recent Community Health Needs Assessment (CHNA). The need being addressed by strategies and programs is:</p> <ul style="list-style-type: none"> • Access to Healthcare (Financial Security)
<p>Strategies and Programs to Address Needs</p>	<p>The hospitals intends to take action and to dedicate resources to these needs, including:</p> <ul style="list-style-type: none"> • Access to Healthcare - Patient Financial Assistance
<p>Anticipated Impact</p>	<p>The Joint Venture Hospitals will launch their three-year Community Health Implementation Strategy to address the identified significant health need of access to care.</p> <p>The anticipated impact is to help ensure financial access to medical necessary care by patients who qualify for financial assistance under the hospitals’ financial assistance policy.</p>
<p>Planned Collaboration</p>	<p>The hospitals will partner with local community-based organizations, internal departments, and St. Joseph’s Hospital and Medical Center to improve access to care.</p>

This document is publicly available online at the hospital’s website. Written comments on this report can be submitted to the Community Benefit and Health Equity Department located at 350 W Thomas Road, Phoenix, AZ 85013 or by e-mail to CommunityHealth-SJHMC@dignityhealth.org.

The Hospitals and the Community Served

About the Hospitals

The Dignity Health Arizona Joint Venture Hospitals (JVHs) are part of CommonSpirit Health, one of the largest nonprofit health systems in the U.S., with more than 1,000 care sites in 21 states coast to coast, serving 20 million patients in big cities and small towns across America.

Arizona Specialty Hospital

Dignity Health Arizona Specialty Hospital is a hospital that offers a variety services including bariatric services and orthopedic services. Dignity Health Specialty Hospital is located at 2905 W Warner Road, Chandler, AZ. This Chandler hospital is one of the best specialty hospitals in Arizona. As part of the Dignity Health network, Dignity Health Arizona Specialty Hospital is dedicated to delivering high quality, compassionate care and access to Chandler and nearby communities.

Arizona Spine & Joint Hospital

Arizona Spine & Joint Hospital is an award-winning orthopedic specialty hospital offering outpatient and elective inpatient services for orthopedic, spine, podiatry and pain management patients. Located at 4620 E Baseline Road, Mesa, AZ, Arizona Spine & Joint is dedicated to providing the highest quality surgical services and a five-star patient experience. Arizona Spine and Joint Hospital has become one of the areas premiere facilities for orthopedic, spine, podiatric, and pain management care.

East Valley Rehabilitation Hospital

East Valley Rehabilitation Hospital is a state-of-the-art, inpatient acute rehabilitation hospital dedicated to the treatment and recovery of individuals who have experienced a loss of function due to an injury or illness. Located at 1515 W Chandler Blvd, Chandler, AZ, Dignity Health East Valley Rehabilitation Hospital offers intensive, patient focused, specialized rehabilitation services that provide ongoing care to patients in their recovery journey. Their customized, intensive rehabilitation is tailored to the individual needs of those recovering from stroke, brain injury, neurological conditions, trauma, spinal cord injury, amputation, and orthopedic injury.

OASIS Hospital

OASIS Hospital is a hospital that offers many services, including orthopedic procedures, total joint replacement, and sports medicine. OASIS Hospital is located at 750 N 40th St, Phoenix, AZ. This Phoenix Hospital is one of the best in Arizona. As part of the Dignity Health network, OASIS Hospital is dedicated to delivering high quality, compassionate care and access to Phoenix and nearby communities.

Our Mission

The Joint Venture Hospitals' dedication to assessing significant community health needs and helping to address them in conjunction with the community is in keeping with its mission. As CommonSpirit Health, we make the healing presence of God known in our world by improving the health of the people we serve, especially those who are vulnerable, while we advance social justice for all.

Financial Assistance for Medically Necessary Care

It is the policy of CommonSpirit Health to provide, without discrimination, emergency medical care and medically necessary care in CommonSpirit hospital facilities to all patients, without regard to a patient's financial ability to pay. The Joint Venture Hospitals' have a financial assistance policy that describes the assistance provided to patients for whom it would be a financial hardship to fully pay the expected out-of-pocket expenses for such care, and who meet the eligibility criteria for such assistance. The financial assistance policy, a plain language summary and related materials are available in multiple languages on the hospital's website.

Description of the Community Served

Dignity Health Arizona Joint Venture Hospitals' (JVHs) community is defined as Maricopa County. However, some service areas of the joint venture hospitals do extend beyond Maricopa County. Therefore, Arizona state-wide resources may be utilized when available.

Maricopa County in addition to the state of Arizona was chosen as the community definition due to the broad range of Dignity Health Arizona Joint Venture Hospital's service area. Figure 1 below encompasses the patient zip codes serviced by the JVHs – which span within and outside of Maricopa County.

Maricopa County is the fourth most populous county in the United States. Based on 2019 American Community Survey (ACS five-year estimates, Maricopa County has an estimated population of over 4.3 million and growing, home to well over half of Arizona's residents. Maricopa County encompasses 9,224 square miles, includes 27 cities and towns, as well as the whole or part of five sovereign American Indian reservations.

The JVHs serve patients across and outside of Maricopa County, hence the community definition also extends into the state of Arizona. Arizona's population in 2019 was 7,050,299 with a median age of 37.7. The state of Arizona is made up of predominantly Caucasian/White individuals (77.2%), followed by Latino/Hispanic (31.3%), Black/African American (5.7%), Asian (4.4%), American Indian/Alaska Native (5.7%), and Native Hawaiian and Other Pacific Islander (0.5%). In 2019, the median household income in Arizona was \$58,945 with a poverty rate of 15.1%. The educational attainment statistics in Arizona in 2019 were as follows: less than high school graduate (15.6%), high school graduate (33.1%), some college/associate's degree (43.0%), and bachelor's degree or higher (8.4%).



Arizona Specialty Hospital

Arizona Specialty Hospital is physically located in the City of Chandler, AZ. Arizona Specialty Hospital's primary service area is all of Maricopa County and extends a bit beyond the County lines, including the following zip codes 85122, 85138, 85140, 85139, 85123, 85132, 85194, 85143, and 85120.

Arizona Spine & Joint Hospital

Arizona Spine & Joint Hospital is physically located in the City of Mesa, AZ. Arizona Spine & Joint Hospital's primary service area is all of Maricopa County and extends a bit beyond the County lines, including the following zip codes 85122, 85138, 85140, 85139, 85123, 85132, 85194, 85143, and 85120.

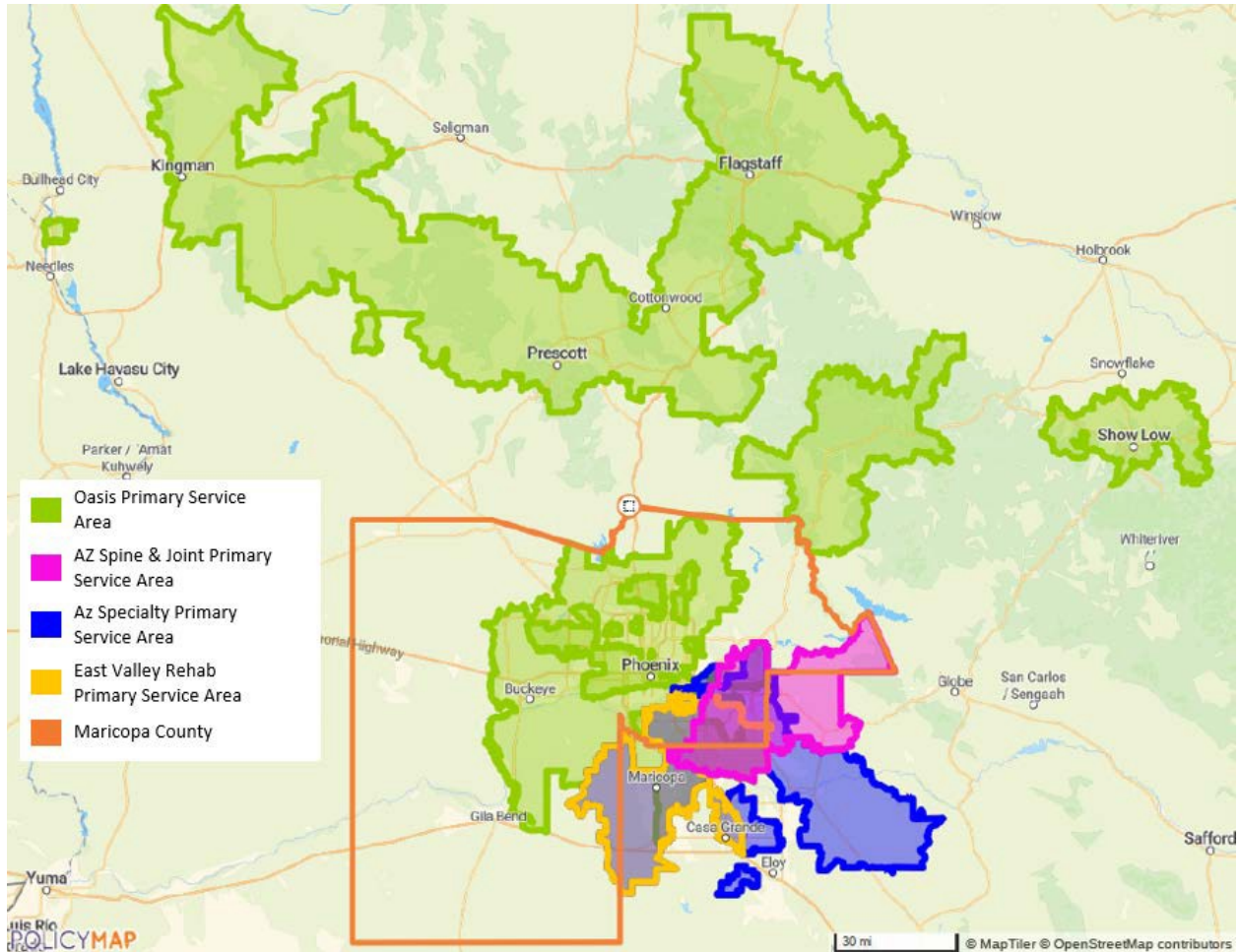
East Valley Rehabilitation Hospital

East Valley Rehabilitation Hospital is physically located in the City of Chandler, AZ. East Valley Rehabilitation Hospital's primary service area is all of Maricopa County and extends to the following zip codes 85138, 85122, and 85139.

Oasis Hospital

OASIS Hospital is physically located in the City of Phoenix, AZ. OASIS Hospital's primary service area is all of Maricopa County and extends a bit beyond the County lines, including the following zip codes 86004, 86336, 86001, 86351, 86314, 86401, 86305, 86323, 85325, 86303, 86327, 86315, 85541, 86409, 85138, 86322, 86005, 86426, and 85901.

Figure 1. Dignity Health Arizona Joint Venture Hospitals Service Areas in Maricopa County



Community Assessment and Significant Needs

The health issues that form the basis of the hospitals' community health implementation strategy and programs were identified in the most recent CHNA report, which was adopted in April 2022. The CHNA contains several key elements, including:

- Description of the assessed community served by the hospital;
- Description of assessment processes and methods;
- Presentation of data, information and findings, including significant community health needs;
- Community resources potentially available to help address identified needs; and
- Discussion of impacts of actions taken by the hospital since the preceding CHNA.

Additional detail about the needs assessment process and findings can be found in the CHNA report, which is publicly available on the hospital's website or upon request from the hospital, using the contact information in the At-a-Glance Summary.

Significant Health Needs

The CHNA identified the significant needs in the table below, which also indicates which needs the hospital intends to address. Identified needs may include specific health conditions, behaviors and health care services, and also health-related social needs that have an impact on health and well-being.

Significant Health Need	Description	Intend to Address?
Access to Healthcare <ul style="list-style-type: none"> Financial Security 	<p>Access to healthcare is defined as the timely use of health services to achieve the best possible health outcomes. Many people face barriers that prevent or limit access to needed health care services.</p> <ul style="list-style-type: none"> Financial Security refers to having the coverage and/or other means necessary for health care expenses. 	✓
Addiction / Substance Abuse	<p>Addiction is a chronic disorder characterized by compulsive drug use despite adverse consequences. If left untreated, it can cause serious harmful effects and may lead to death.</p> <p>Substance Abuse is the repeated harmful use of any substance, including drugs and alcohol, which can lead to addiction.</p>	
Affordable Housing / Homelessness	Affordable Housing/Homelessness is often identified as an important social determinant of health due to the range of ways in which a lack of housing, or poor quality housing, can negatively affect health and wellbeing.	
Cancer	Cancer is a large group of diseases that can start in almost any organ or tissue of the body when abnormal cells grow beyond their usual boundaries to invade adjoining parts of the body and/or spread to other organs.	
Chronic Health Conditions <ul style="list-style-type: none"> Obesity Diabetes Cardiovascular Disease (CVD) 	<p>Chronic Health Conditions are health conditions or diseases that are persistent or otherwise long-lasting in their effects.</p> <ul style="list-style-type: none"> Obesity is a complex health issue resulting from a combination of causes and individual factors such as behavior and genetics. Behaviors can include physical activity, inactivity, dietary, dietary patterns, medication use, and other exposures. Diabetes is a chronic, metabolic disease characterized by elevated levels of blood glucose (or blood sugar). The most common is type 2 diabetes. Cardiovascular Diseases (CVDs) are a class of diseases that affect the heart or blood vessels. The most important behavioral risk factors of heart disease and stroke are unhealthy diet, physical inactivity, tobacco use and harmful use of alcohol. 	
Food Insecurity	Food Insecurity refers to the state of being without reliable access to a sufficient quantity of affordable, nutritious food.	

Significant Health Need	Description	Intend to Address?
Mental Health	Mental Health includes emotional, psychological, and social well-being, and affects how individuals think, feel, and act.	
Safety & Violence <ul style="list-style-type: none"> • Unintentional Injuries 	Safety and Violence are a significant cause of death and burden of disease, and some people are more vulnerable than others depending on the conditions in which they are born, grow, work, live and age. <ul style="list-style-type: none"> • Unintentional Injuries can be predictable and preventable. Leading causes of nonfatal injury include traffic-related injuries, falls, burns, poisonings, and drownings. 	

Significant Needs the Hospital Does Not Intend to Address

As small specialty services facilities, the hospitals do not intend to directly address the following significant health needs due to limited capacity of hospital staff, limited capacity of available hospital services, and limited resources. While the hospitals will not *directly* address the needs listed below, they will indirectly support work being done in the community to address these needs when possible. The hospitals have strong relationships with other Dignity Health Arizona Hospitals, including St. Joseph’s Hospital and Medical Center, Chandler Regional Medical Center, and Mercy Gilbert Medical Center who have each made a variety of strategies to address many of the needs listed below. The hospitals will also secure and maintain key partnerships with community-based organizations that are addressing the needs listed below.

- Addiction / Substance Abuse
- Affordable Housing / Homelessness
- Cancer
- Chronic Conditions – Obesity, diabetes and cardiovascular disease.
- Food Insecurity
- Mental Health
- Safety & Violence

Using a Health Equity Lens

The Joint Venture Hospitals’ are dedicated to improving access to care and promoting health equity for all across all prioritized significant health needs.

Health Equity means that everyone has a fair and just opportunity to be as healthy as possible. Health equity is achieved when every person has the opportunity to attain his or her full health potential and no one is disadvantaged from achieving this potential because of social position or other socially determined circumstances.

2022 Implementation Strategy

This section presents strategies and program activities the hospital intends to deliver, fund or collaborate with others on to address significant community health needs over the next three years, including resources for and anticipated impacts of these activities.

Planned activities are consistent with current significant needs and the hospitals' mission and capabilities. The hospital may amend the plan as circumstances warrant, such as changes in community needs or resources to address them.

Creating the Implementation Strategy

The hospitals are dedicated to improving community health and delivering community benefit with the engagement of its management team, board, clinicians and staff, and in collaboration with community partners.


Hospital and health system participants include the CommonSpirit Health System Office, the St. Joseph's Hospital and Medical Center's Community Benefit and Health Equity Department, and the Joint Ventures Executive Leadership Teams.



Community input or contributions to this implementation strategy included conducting a Community Health Needs Assessment with community input using five core principles to guide planning and program implementation; measuring and tracking program indicators and their impact; input from the Community Benefit and Health Equity Committee (CBHEC) and the Health Equity Alliance (HEA) and other stakeholders in the development of the triennial implementation strategy.

The initiative described here was selected on the basis of priority as it relates to one or more of the following principles: focus on disproportionate unmet health-related needs; emphasize prevention including activities that address the social determinants of health; build community capacity; demonstrate collaboration; and contribute to a seamless continuum of care. The strategy identified that addresses a significant need is achievable through the hospitals' capacity to meet the need, available resources, existing hospital services, and collaborative partnerships.

Strategy by Health Need

 Health Need: Access to Healthcare	
Anticipated Impact (Goal)	The hospitals' initiatives to address access to care are anticipated to result in: early identification and treatment of health issues; gains in public or private health care coverage; and increase knowledge about how to access the healthcare system.
Strategy or Program	Summary Description
Enrollment assistance and financial assistance	Application of the Financial Assistance Policy for medically necessary services for uninsured or underinsured patients.
Planned Resources	The hospital will provide support for patient financial assistance.
Planned Collaborators	The hospital will partner with local community based organizations to deliver this access to care strategy.